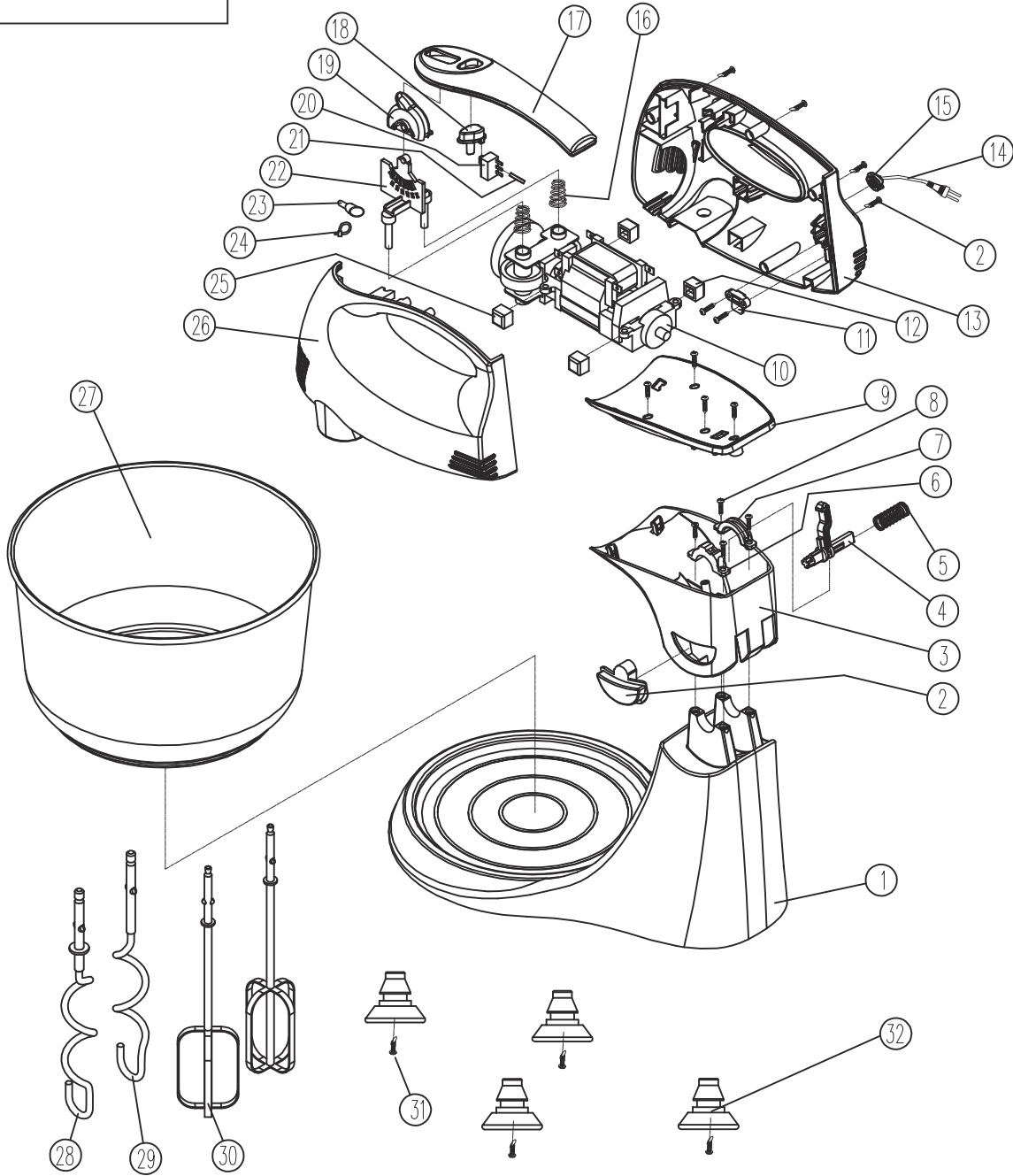


止七西ハ

PHSM300



32	SCREW	4	
31	HM901	4	
30	HM925-80-01 MIXED BAR	2	
29	HM925-80-02 DOUGH HOOK	1	
28	HM925-80-03 DOUGH HOOK	1	
27	HM925-20-01 BOWL	1	$\phi=0.6\text{mm}$
26	HM925-10-01 LEFT CARAPACE	1	ABS
25	HM816-4-01 MOTOR FOOT	2	
24	TAPE	1	PA 100mm
23	CONNECTOR	1	CE-2
22	HM925-10-13 SWITCH BOARD	1	PA
21	SHRIND	1	$\phi 3.0 \times 18\text{mm}$
20	MICRO SWITCH	1	
19	HM925-10-14 KNOB OF CHANGE	1	ABS
18	HM925-10-08 KEYING	1	ABS
17	HM925-10-03 HANDLE COVER	1	ABS
16	HM925-80-05 EJECT SPRING	2	65Mn
15	BUSHING	1	PVC
14	POWER PLUG&CORD	1	SPT-2 18AWG/2C UI
13	HM925-10-02 RIGHT CARAPACE	1	ABS
12	HM816-4-02 MOTOR BACK FOOT	2	
11	STRAIN RELER	1	PP
10	MOTOR	1	XB45/40L 120VAC 60Hz 300W
9	HM925-10-07 BASE UP COVER	1	ABS
8	SCREW	4	ST3.5X12/A/Q235A
7	HM925-10-12 PRESS PLATE	1	ABS
6	HM925-10-11 PRESS PLATE	1	ABS
5	HM925-80-04 SPRING	1	65Mn
4	HM925-10-10 LOCK UP	1	PA
3	HM925-10-06 BASE UP	1	ABS
2	HM925-10-09 BUTTON	1	ABS
1	HM925-10-04 BASE	1	ABS

ITEM	NAME	QTY	
	H		△