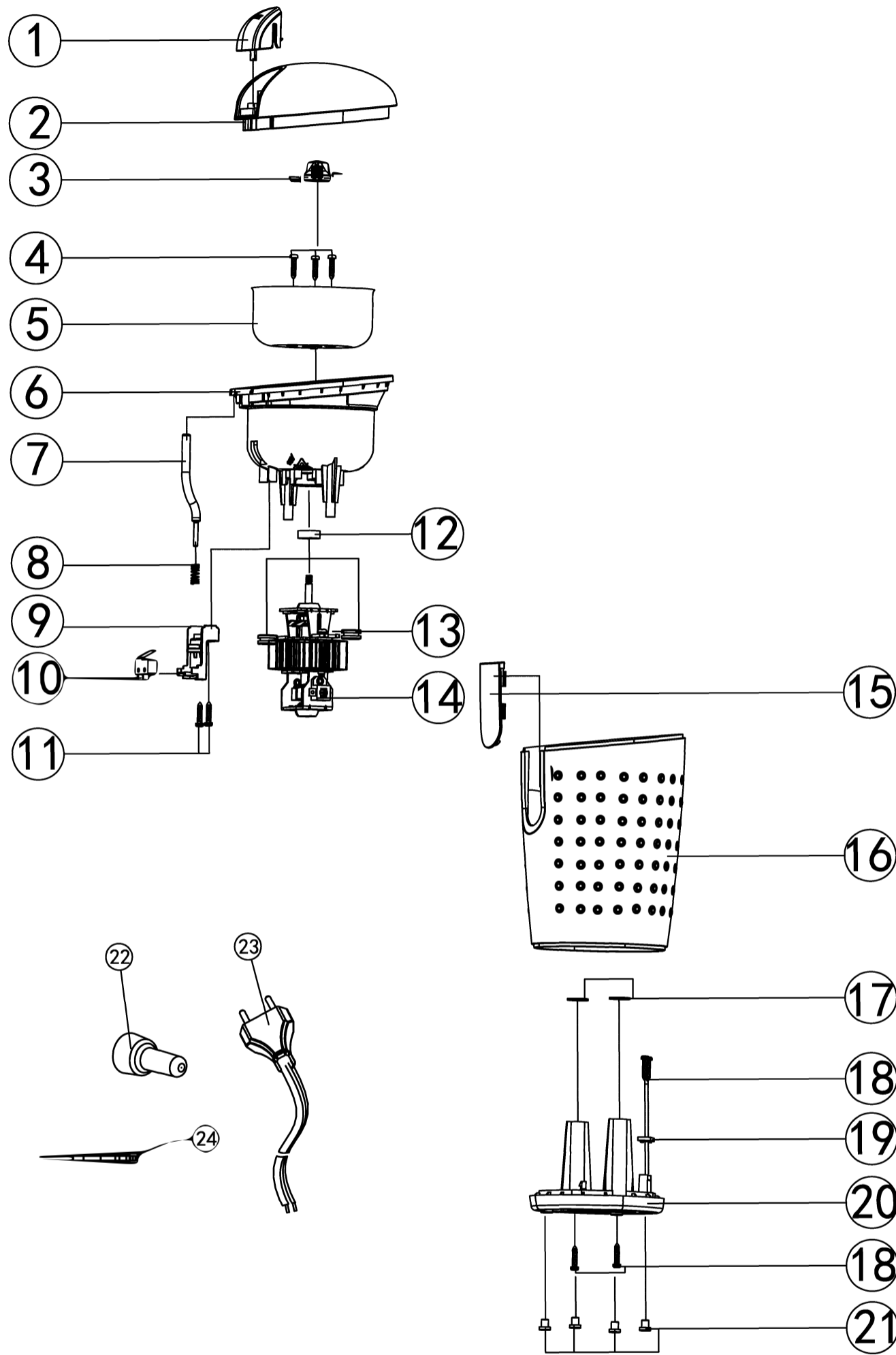


PCG5I9



24		Ligature Band	PA L=100	1	
23	CG8810/016	Power Line	18AWGx2C 300V 60°	1	
22		Terminal Cap	CE2 150°C	2	
21	CG8810/011	Foot Pads	NBR	4	
20	CG8810/006	Base	ABS	1	
19		Cord Pressing Plate	ABS	1	借用HL-2371
18		Scwer	PA3.0*12	4	
17		Washer	φ6*φ12*0.8T	2	
16	CG8810/005	Housing	ABS	1	
15	CG8810/004	Decorate Plate	ABS	1	
14	CG8810/015	Motor	120V 60Hz 150W #5420	1	
13	HL-2371/009	Shockproof Pad	NBR	2	借用HL-2371
12	HL-2371/010	Wool Felt	Wool	1	
11		Screw	PA3.0*10	2	
10		Switch		1	KW4-3Z-3
9	CG8810/008	Switch Holder	ABS	1	
8	BL3316/022	Spring		1	借用BL3316
7	CG8810/007	Safe Pole	ABS	1	
6	CG8810/003	Cup Base	ABS	1	
5		Grind Cup	SUS	1	借用2069B
4		Screw	PA3.0*10 SUS	3	
3	HL-2371/100	Blender ASM	POM+SUS301	1	
2	CG8810/001	Cup Cover	AS	1	
1	CG8810/002	Botton	ABS	1	