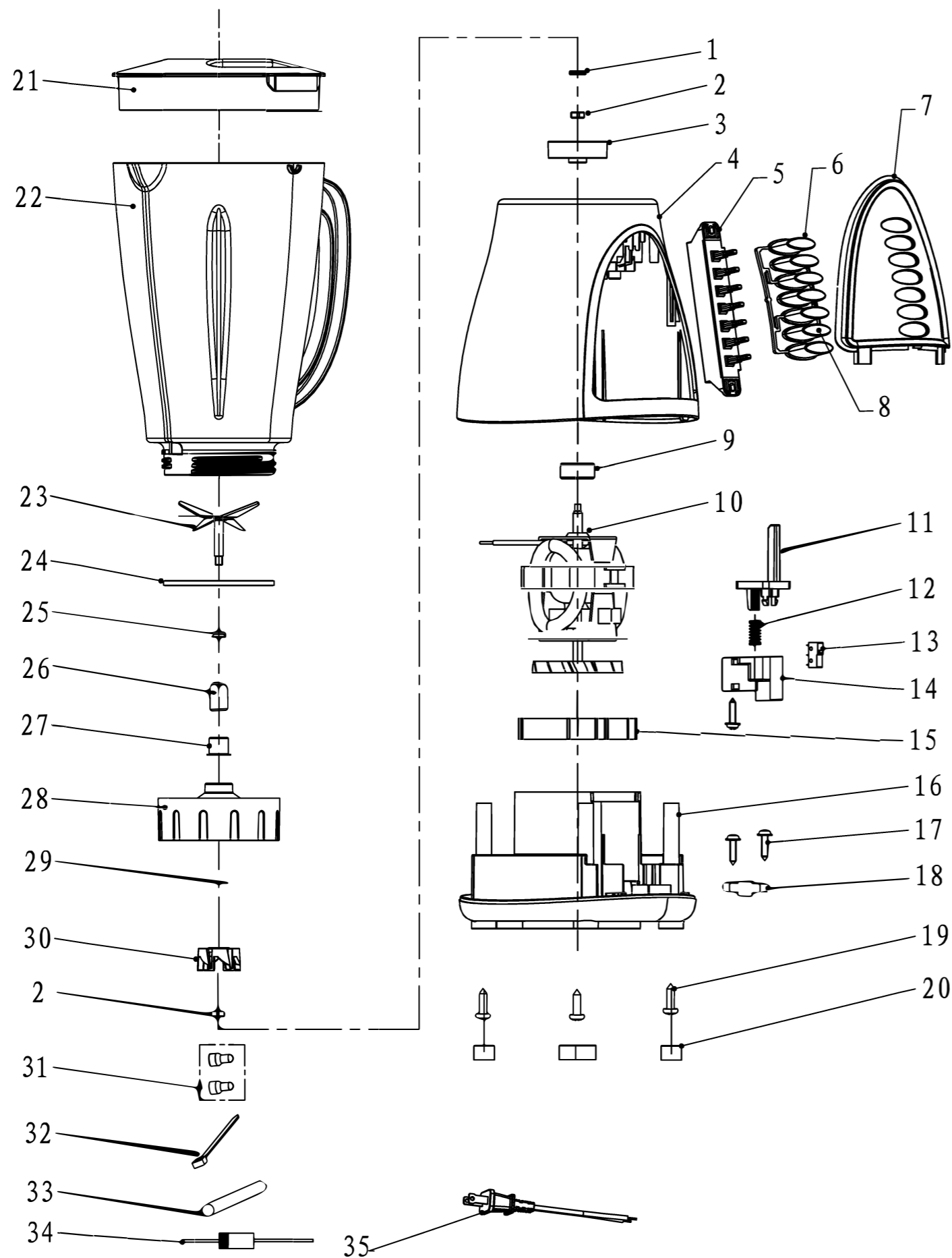


A

B

C

D



35	BL1009A-ET-60-02	Power cord	1	SPT-2 18AWG 300V/105℃	UL极性插
34			1	IN5408/R	
33		Shrinkage tube	1	Φ5/125℃/ 30mm	
32		Nylon tie	2	2.5×100/PA	
31		Closed end terminal	2	KX-C2/ φ3.0	
30	BL1009-CB-10-12	Upper connector	1	PA66+30%GF	
29		Washer	1	Φ6.2×Φ10×0.5	
28	BL1009-CB-10-05	Jar base	1	PP	
27	BL1009-CB-20-01	Oil bearing bracket	1	SUS304	
26	BL9285-30-01	Oil bearing	1		
25	BL9285-40-03	Blade shaft seal ring	1		
24	BL1009-CB-40-03	Jar base seal ring	1		
23	BL1009-CB-01-01	Blade ASM	1	SUS304+SUS301	
22	BL1009-CB-10-03	Jar	1	AS	
21	BL1009-CB-10-04	Jar cover	1	PP	
20	XB9168-40-01	Rubber foot	4		
19		A Screw	4		
18	HM848-1-09	Strain relief	1	PP	
17		A Screw	3		
16	BL1008-CB-10-02	Base	1	PP	
15	BL1009-CB-40-01	A Shockproof mat A	1	50° -60°	
14	BL1008-CB-10-05	Safe switch retainer	1	PA66+30%GF	
13		switch	1		
12	BL9285-80-02	Safe switch spring	1	65Mn	
11	BL1008-CB-10-04	Safe switch lever	1	POM F20-03	
10	BL1009A-ET-60-01	Motor	1	KH76/15 120V 60Hz 400W Class 85	
9	BL1009-CB-40-02	B Shockproof mat B	1		
8	BL1008B-CB-10-03	2 Switch botton 2		ABS	
7	BL1008B-CB-10-01	Control panel	1	PP	
6	BL1008B-CB-10-02	Switch botton 1	1	ABS	
5		Piano switch asm	1	250V 5A	
4	BL1008-CB-10-01	Body	1	PP	
3	BL1009-CB-10-07	Lower connector	1	PA66+30%GF	
2	BL1009-CB-80-01		2	SUS304	
1	BL1009-CB-10-08	Lower connector cover	1	PA66+30%GF	

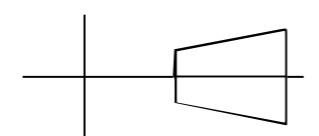
A

B

C

D

PB360



1

2

3