

Safety Instructions

ATTENTION

GROUNDING INSTRUCTIONS

This appliance must be grounded. In the event of an electrical short circuit, grounding reduces the risk of electrical shock by providing an escape wire for the electrical current. This appliance is equipped with a cord having a grounding wire with a grounding plug. The plug must be plugged into an outlet that is properly installed and grounded.

WARNING - Improper use of the grounding plug can result in a risk of electric shock. Consult a qualified electrician or serviceman if the grounding instructions are not completely understood, or if doubt exists as to whether the appliance is properly grounded.

DO NOT USE AN EXTENSION CORD

Use an exclusive wall outlet. Do not connect your freezer to extension cords or together with any other appliance in the same wall outlet. Do not splice the cord.

IMPORTANT WARNING

An empty freezer is a very dangerous attraction to children. Remove either the gasket, latches, lids or doors from unused appliances, or take some other action that will guarantee it harmless.

DON'T WAIT! DO IT NOW!

Installation

Remove exterior and interior packings, wipe the outside thoroughly with a soft dry cloth and the inside with a wet, lukewarm cloth. Avoid placing the cabinet in a narrow recess or near any heat source, direct sunlight, or moisture. Let air circulate freely around the cabinet. Keep the rear of the freezer 5 inches away from the wall.

Location

1. Select a place with a strong, level floor.
2. Allow 5 inches of space between the back of the freezer and any adjacent wall.
3. Avoid direct sunlight and heat. Direct sunlight may affect the acrylic coating. Heat sources nearby will cause higher electricity consumption.
4. Avoid very moist places. Too much moisture in the air will cause frost to form very quickly on the evaporator, and your freezer will have to be defrosted more frequently.

Operation

To avoid vibration, the cabinet must be set level. This is accomplished by adjusting the (2) front leveling legs located under the freezer cabinet. To start the freezer, turn the temperature control to the position corresponding to the desired cooling.

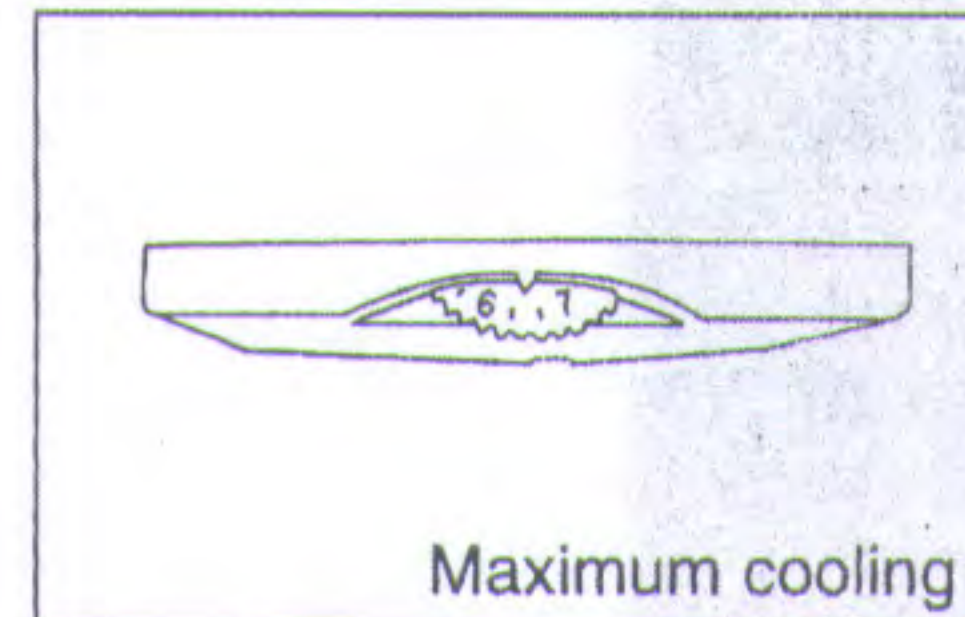
0 = No Cooling

3, 4 = Medium Cooling

1 = Minimum Cooling

7 = Maximum Cooling

The freezer temperature will vary depending on the quantity of the food stored and on the frequency with which the door is opened.



Defrosting Instructions

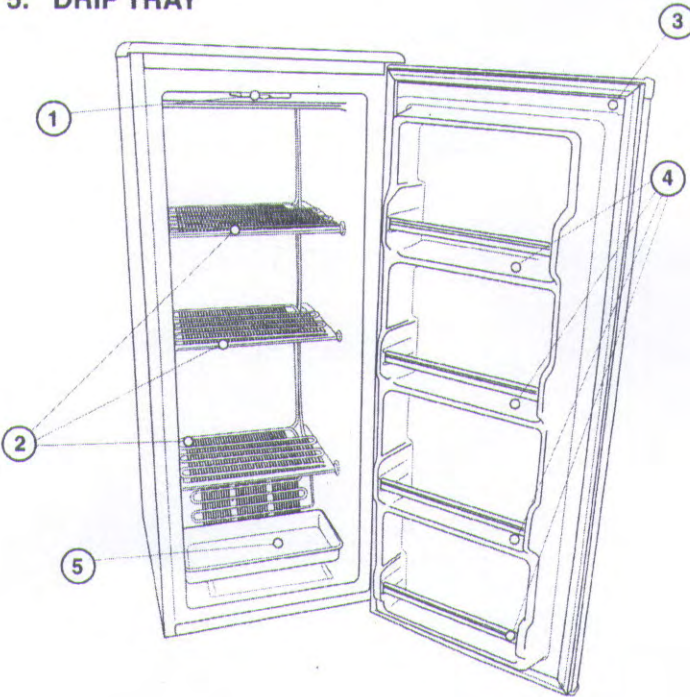
Defrost and clean your freezer when frost has built up to about 1 1/4" (6mm) thickness. Complete defrosting and cleaning should be done at least once a year. In high humidity areas, a freezer may need more frequent defrosting and cleaning.

IMPORTANT: Do not use an ice pick, knife or other sharp-pointed tool to defrost freezer. Damage can occur.

1. Turn temperature control to '0' (off) and unplug power cord.
2. Remove all frozen food. Wrap frozen food in several layers of newspaper and cover with a blanket. Food will stay frozen for several hours **OR** store frozen food in a cooler, additional refrigerator-freezer or in a cool area.
3. Place pans of hot water in freezer with door open to speed melting. Directing air from an electric fan into freezer will also help.
Do not place fan in freezer.
4. Remove frost.
5. Wipe water from walls and bottom of freezer with a towel or sponge.
6. Wash inside walls.
7. Rinse and dry thoroughly.
8. Replace all frozen food.
9. Plug in power cord and refer to "Operation."

GFL-250 Features

1. **THERMOSTAT DIAL:** For controlling the temperature inside the freezer. Turns the motor on as soon as the temperature rises above the desired level.
2. **REFRIGERATED SHELVES:** 3 full width refrigerated shelves.
3. **MAGNETIC GASKET:** Tight fitting door seal keeps all the cooling power locked inside. No hooks or latches.
4. **DOOR BINS (4)**
5. **DRIP TRAY**



DOOR REVERSAL INSTRUCTIONS

CAUTION: To avoid personal injury to yourself and/or property, we recommend someone assist you during the door reversal process.

1. To access the lower hinge assembly, tilt back the freezer cabinet or lay the freezer on its back. (Fig. C)
2. Remove both leveling legs located at the front of the cabinet.
3. Remove the screws holding the lower hinge assembly to the cabinet.
4. Remove the main door assembly from the freezer cabinet. (lift door slightly and pull downward)
5. Using a flat heat screwdriver, remove the main door top hinge pin. (Fig. D)
6. Re-install the main door top hinge pin on the opposite side of the cabinet.

- 7a. Remove the door plug and door bushing located on the top of the main door.
- 7b. Interchange their positions. (eg. door plug right side, door bushing left side.)
8. Re-install main door assembly on cabinet.
9. Remove door bushing (bottom door) and install on opposite side.
10. Re-install the lower hinge assembly on the opposite side.
11. Make sure the door assembly is properly aligned on the cabinet before tightening lower hinge screws.
12. Re-install both leveling legs. The process is now complete.

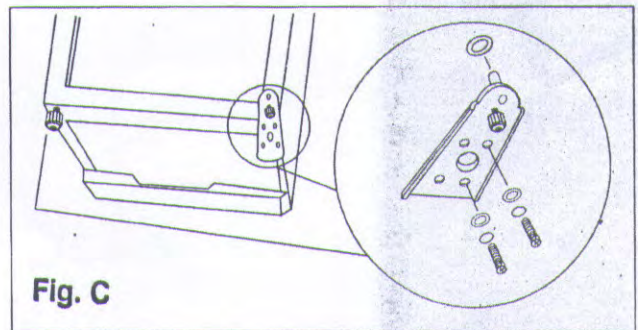


Fig. C

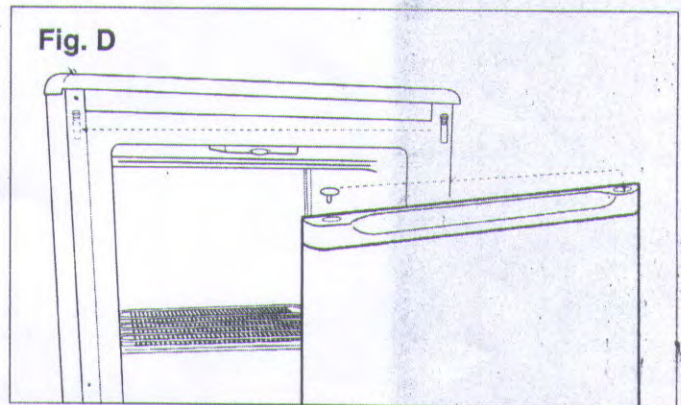


Fig. D

Care and Maintenance

Cleaning

To clean the inside, use a soft cloth and a mixture of one tablespoon of baking soda to one quart of water. Other cleaning solutions options are a mild soap suds solution, or mild detergent. Wash glass shelves in a mild detergent solution, then dry and wipe with a soft cloth. Clean the outside with a soft damp cloth and some mild detergent or appliance cleaner.

Vacation Time

For short vacation periods, leave the control knob at its normal setting. During longer absences;

- (a) remove all foods,
- (b) disconnect power cord from electrical outlet
- (c) clean the freezer thoroughly, including drip tray (defrost pan), located on the bottom of the unit.
- (d) leave door open to avoid possible formations of condensate, mold or odors.

Power Failure

Most power failures are corrected within an hour or two and will not affect your freezer temperatures. However, you should minimize the number of door openings while the power is off. During power failures of longer duration, take steps to protect your food by placing dry ice on top of packages.

If You Move

Remove or securely fasten down all loose items inside the freezer. To avoid damaging the leveling legs, turn them all the way into the base.

Some Important Rules for the Correct Use of the Freezer

- Never place hot foods in the freezer.
 - Never place spoiled foods in the cabinet.
 - Don't overload the cabinet.
 - Don't open the door unless necessary.
-
- Should the freezer be stored without use for long periods, it is suggested that, after a careful cleaning, to leave the door ajar to allow the air to circulate inside the cabinet in order to avoid possible formations of condensate, mold or odors.

Care and Maintenance

Frequently, a problem is minor and a service call may not be necessary, use this troubleshooting guide for a possible solution. If the unit continues to operate improperly, call an authorized service depot for assistance.

Difficulty	Possible Cause	Suggested Solution
Does not work.	No power to unit Power cord is unplugged. Wrong voltage is being used.	Check connection of power cord to power source. Plug in unit. Use proper voltage.
Freezer runs continuously	Temperature too high. Door is not closed. Hot food inserted. Door opened too long or too often. Close proximity to heat source or direct sunlight.	Lower temperature control. Close door securely. Be sure that food is at room temperature before inserting. Do not keep door open for too long. Minimize door openings. Do not place unit close to heat sources or direct sunlight.
Internal temperature not cold enough.	No power to unit. Power cord is unplugged. Temperature control too low. Door is not closed. Hot food inserter Door opened too long or too often. Air flow obstruction. Wrong voltage is being used. Close proximity to heat source or direct sunlight.	Check connection of power cord to power source. Plug in unit. Check setting and increase as needed. Close door securely. Be sure that food is at room temperature. Do not keep door open for too long. Minimize door openings. Allow room for air to circulate around unit. Use proper voltage. Do not place unit close to heat sources or direct sunlight.