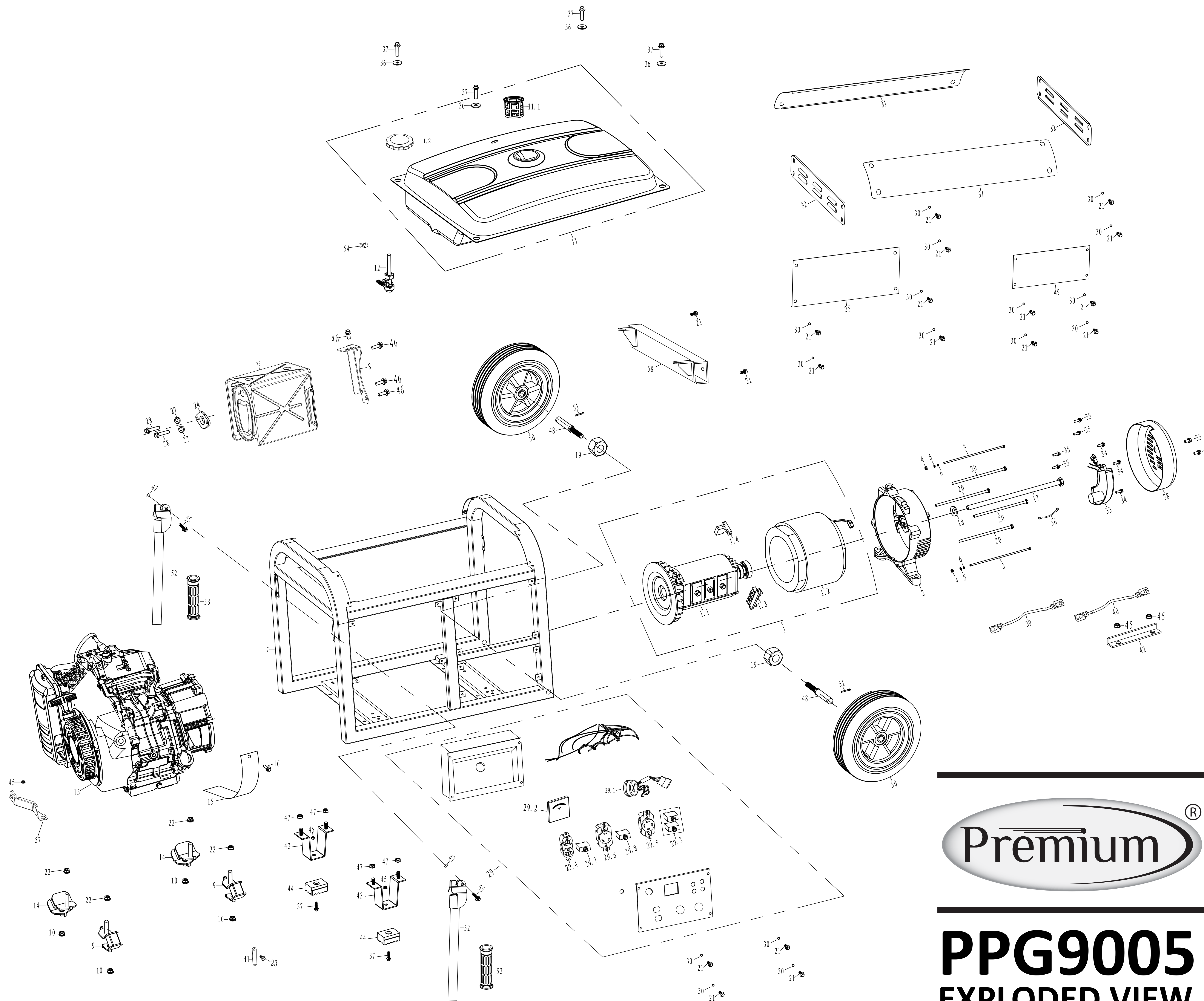


PPG9005
EXPLODED VIEW
PARTS LIST

NO.	Code	Part name	quantity
1	DI190F-11100-B	Crankcase	1
2	GB276-89-6202	Ball bearing	2
3	DI188F-11014-A	Oil Seal	2
4	DI188F-18009-A	Seal,governor arm shaft	1
5	DI188F-15001-A	Shaft,Governor arm	1
6	DI188F-15002-A	washer,governor arm shaft	1
7	DI188F-15003-A	Pin,Lock	1
8	DI188F-11004-A	Bolt, Drain Plug	2
9	DI188F-11005-A	Washer,Drain Plug	2
10	DI188F-18200-B	Switch Assembly,Oil Level	1
11	DI188F-18007-A	CLAMPER CORD A	1
12	DI168F-11002-A	Dowel pin,casecover	2
13	DI190F-12001-A	Piston	1
14	DI190F-12300-A	Piston ring set	1
15	DI190F-12200-AE	Rod Assembly, Connecting	1
16	DI188F-12002-A	Pin, Piston	1
17	DI188F-12003-A	Clip, Piston	2
18	DI188FD-11001-A	Cover Assembly, Crankcase	1
19	GB276-89-6207	Ball bearing	1
20	DI188F-15100-A	Governor Assembly	1
21	DI188F-11200-B	Cylinder head	1
22	DI188F-13001-A	Valve,In	1
23	DI188F-13002-A	Valve Exhaust	1
24	DI188F-13010-A	Returner,Intake Valve	1
25	DI188F-13011-A	Oil Seal,Valve	1
26	DI188F-13003-A	Spring,Valve	2
27	DI188F-13004-A	Seat, valve spring,in	1
28	DI188F-13005-A	Seat, valve spring,Ex	1
29	DI188F-13300-A	Plate,Push Rod Guide	1
30	DI188F-13201-A	Rocker assy	2
31	DI188F-13006-A	Rotator	1
32	DI188FD-14001-A	Bolt, Stud	2
33	DI168F-14002-B	Bolt, Stud	2
34	DI188F-14006-C	Packing,Exhaust	1
35	DI188FD-14009-E	Exhaust Pipe	1
36	GBT93-LW-8	Spring Washer	2
37	GB6170-N-8	Nut M8	2
38	DI190FD-14100-BE	Carburetor components	1
38.1	DI188F-14106-A	float	1
38.2	DI188F-14109-A	fuel injection needle	1
39	DF8000H-14007-A	Fuel line	1
40	DI168F-14008-A	Clip,fuel line	1
41	DI188F-15004-A	Governor arm	1
42	DI168F-15005-A	Bolt,governor Arm	1
43	GB6177-N-6	Nut	3
44	DI190F-12100-BE	Crankshaft Assembly	1
45	DI188F-13009-A	Lifter,Valve	2
46	DI188F-11003-B	Packing,casecover	1
47	DI188F-12004-A	Balancing Shaft	1
48	DI190F-13100-AE	Camshaft Assembly	1
49	GBT16674-B8-35	Bolt	7
50	GBT16674-B8-40	Bolt	2
51	DI188F-11009-A	Pin, Dowel	2
52	DI190F-11010-B	Gasket,Cylinder Head	1
53	GBT16674-B10-80	Bolt	4
54	DI168F-18500-A	Spark Pulg	1
55	DI188F-13008-A	Rod,Push	2
56	DI188F-11012-A	Shroud	1
57	GBT16674-B6-12	Bolt	9
58	DI188F-11300-H	Cover comp,cylinder head	1
59	DI188F-11011-A	Packing,headcover	1
60	DI188F-11015-A	lock bolt	1
61	DI188FD-15200-A	Shroud assy,upper	1
62	DI188F-16002-A	Fan,recoil starter	1
63	DI188F-16000-A	Pulley,Starter	1
64	DI188F-16205-A	Nut M14	1
65	DI188F-18100-C	ignition coil assy	1
66	GBT16674-B6-25	Bolt	2
67	DI188F-14003-B	Packing,Intake	1
68	DI188F-14004-A	Insulator,carburetor	1
69	DI188F-14005-B	Packing,carburetor	1
70	DI188F-14027-A	Spacer,carburetor	1
71	DI188F-15006-A	Rod,Governor	1
72	DI188F-15008-A	Spring,Throttl Return	1
73	5160118-147	Recoil Starter Assembly	1
73.1	DI188F-16130-F-147	Starter Comp,Recoil	1
73.2	DI188F-16111-A	rope	1
73.3	DI170S-16110-A	Grip Starter	1
73.4	DI188F-16101-A-147	Recoil starter case	1
74	GBT16674-B6-8	Bolt	1
75	DI188F-11039-B	Clip	2
76	DI188FD-14200-A	Air Cleaner Assembly	1
76.1	DI188FD-14203-A	bottom cover,air cleaner	1
76.2	DI188FD-14201-A	Element,Air cleaner	1
76.3	DI188FD-14204-A	cover,air cleaner	1
76.4	DI188FD-14202-A	BRACKET,ELEMENT	1
77	DI188FD-11013-A	Tube,Breather	1
78	DI168FD-14014-A	Rubber ,fuel	1
79	DI188F-15007-A	Spring,Governor	1
80	DI168F-18300-A	Amplifier	1
81	DI188FD-11007-D	Dipstick	1
82	DI188F-16200-BE	Flywheel Assembly	1
83	DI168F-13202-A	The rocker fastening bolt components	2
84	DI168F-18007-A	CLAMPER CORD A	1
85	DI188F-11017-A	Rubber, Starter assy	1
86	DI188F-18600-A	Starting Motor Assembly	1
87	GBT16674-B6-28	Bolt	2
88	DI168F-18004-A	CHARGE COIL	1
89	GBT16674-B6-16	Bolt	2



PPG9005 EXPLODED VIEW PARTS LIST

NO.	Code	Part name	quantity
1	8322053	motor assembly	1
1.1	DF9000H-33120-FL	Rotator	1
1.2	DF9000H-33110-FL-23602H	stator	1
1.3	DF3800H-33001-A	carbon brush comp	1
1.4	DF3800H-33002-B	grounding post comp	1
2	DF3800H-33005-A	motor stand	1
3	DF9000H-33021-A	Bolt M5×158	2
4	GB6170-N-5-H	Nut M8	2
5	GBT97-W-5	Flat Washer	2
6	GBT93-LW-5	Spring Washer	3
7	8110453-010	Frame	1
8	DF3800H-14404-B	muffler bracket	1
9	DF3800H-31202-A	Isolator B	2
10	GB6170-N-8	Nut M8	4
11	8150022-147	Fuel Tank Assembly	1
11.1	DF2500H-14307-A	Fuel Filter	1
11.2	DF2500H-14306-A	fuel tank cap comp	1
12	DF2500H-14302-A	Fuel Cock	1
13	DFD9000H-F-QQ-001E	Engine Assv	1
14	DF3800H-31201-A	Isolator A	2
15	DF6500H-11032-B	guard cover,crankcase	1
16	GBT820-B5-12	Crossing Screw	1
17	DF9000H-33003-A	Bolt	1
18	DF3800H-14024-A	GASKET ROTOR BOLT	1
19	GB6177-N-12	Nut	2
20	DF9000H-33015-A	Bolt	4
21	GBT16674-B6-12	Bolt	19
22	GB6177-N-10	Nut	4
23	GB818-B6-10	CROSSING SCREW	1
24	DJ188FD-14010-C	Gasket, Exhaust Pipe	1
25	XP10000E-31001-A-010	front panel,LH	1
26	8150181	Muffler COMP	1
27	GBT93-LW-8	Spring Washer	2
28	GBT16674-B8-30	Bolt	2
29	7060027	panel comp	1
29.1	34203-002	Switch Assembly	1
29.2	34205-003	Voltage meter	1
29.3	34208-021	THERMAL PROTECTOR 33A	2
29.4	34204-061	DOUBLE RECEPTACLE AMERICA	1
29.5	34204-060	TWIST LOCK OUTLETS L14-30R	1
29.6	34204-001	TWIST LOCK OUTLETS	1
29.7	34208-021	THERMAL PROTECTOR 20A	1
29.8	34208-028	THERMAL PROTECTOR 30A	1
30	DF2500H-34106-A	Washer	18
31	XP10000E-31009-A-010	R-panel	2
32	XP10000E-31003-A-010	panel,LH	2
33	DF8000H-33011-D	Automatic Voltage Regulator	1
34	GBT16674-B5-16	Bolt	3
35	GBT16674-B5-12	Bolt	7
36	DF2500H-14024-A	Washer, Fuel Tank	4
37	92140-B6-25	Bolt	6
38	8190421-147	End Cover,Generator	1
39	31038-004	positive lead	1
40	31040-004	negative lead	1
41	DF6500H-11033-A	CLIP, WIRE HARNESS	1
42	DF9000HF-31033-A	battery holder	1
43	XP10000E-31020-A-010	Support,frame	2
44	DF9000H-31204-A	vibration isolation pad,square	2
45	GB6177-N-6	Lock Nut	5
46	GBT16674-B8-16	Bolt	2
47	GB6177-N-8	Lock Nut	6
48	DF3000H-31018-A	Axle	2
49	XP10000E-31002-A-010	front panel,RH	1
50	DF6500H-31017-K	Wheel	2
51	DF2500H-31019-B	Cotter Pin	2
52	XP10000E-31058-A-010	Handle Assembly	2
53	DF6500H-31016-A	Rubber, handle	2
54	DJ168F-14008-A	Clip, fuel line	1
55	GBT16674-B8-20	Bolt	2
56	DF6500H-34216-A	grounding wire	1
57	DF6500H-14205-A	BRACKET, AIR CLEANER	1
58	XP10000E-31080-A-010	Beam	1