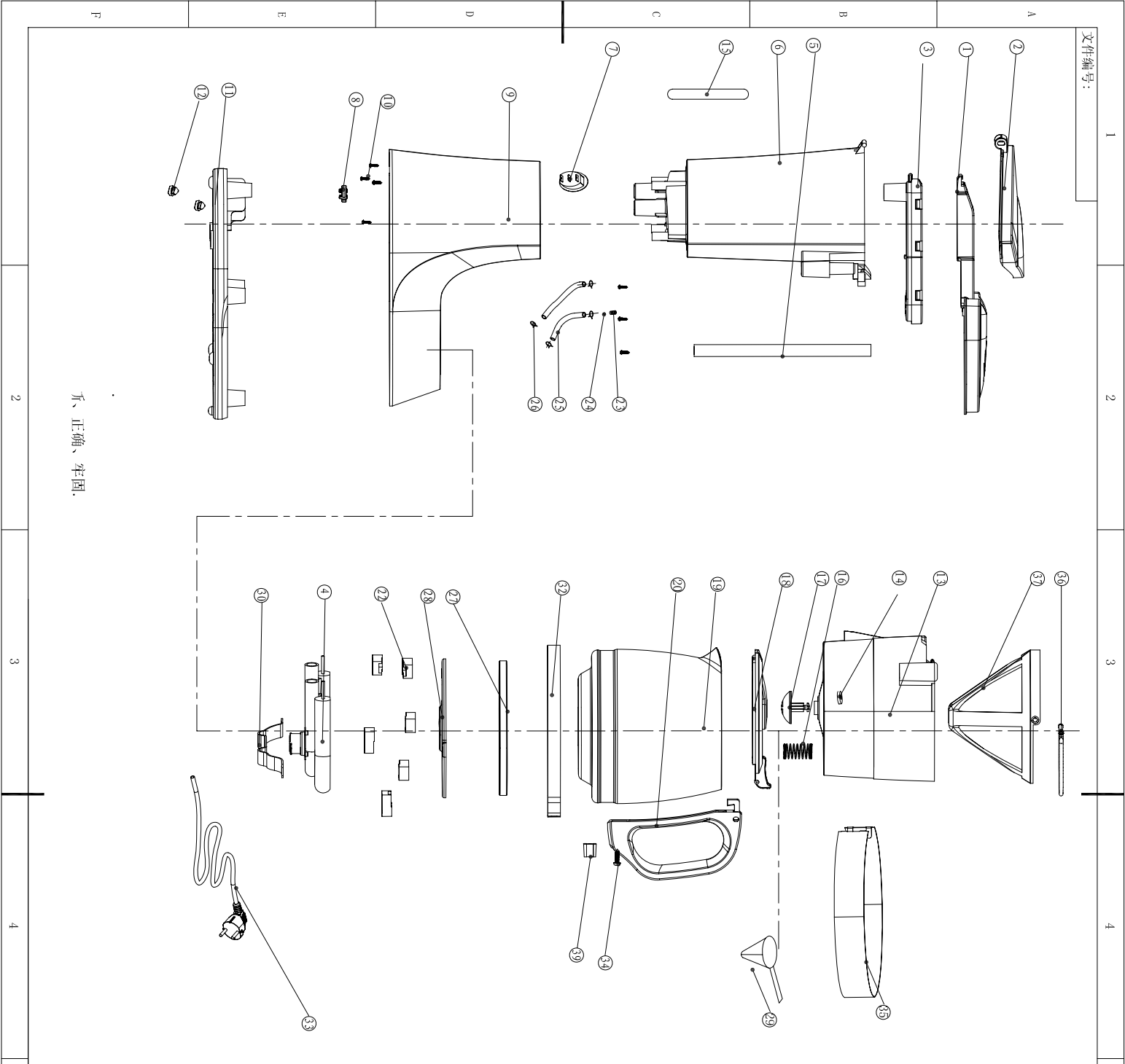
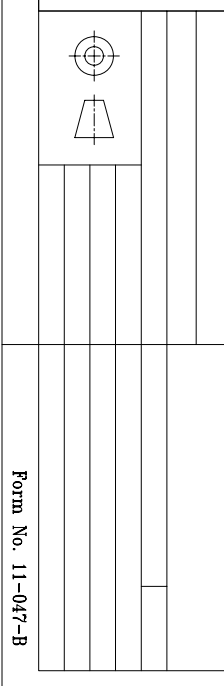


文件编号: _____



39	CM6810-10-20	杯圈固定块	Carafe clamp	1	PP		
38							
37	CM6626-10-14	滤网	Filter	1	PP		
36	CM6626-10-15	滤网提手	Filter Lift	1	PP		
35	CM6630-20-04	主体装饰片	Main body decoration	1	SUS304/磨砂=0.3		
34		白瓷螺釘A	Screw	1	3X12-十字槽半圓頭/不銹鋼		
33	CM6630-00-02	电源线	Power cord	1	100YV-PE 3G 0.75MM ²		
32	CM6630-20-03	杯圈	Carafe ring	1	SUS304/1=0.3		
31	GBT 845-5T3X11MMZ8T	白瓷螺釘B	Screw	2	3T3X11-十字槽半圓頭/加硬鍍白漆		
30	CM6630-20-02	发热管压条	Heat element clamp	1	SECC/T=0.8		
29	CM6620-10-14	咖啡勺	Scoop	1	PP		
28	CM6630-20-01	保温板	Warning plate	1	SECC/T=0.8/噴油		
27	CM6630-10-01	隔热密封胶圈	Insulating seal ring	1	Φ16.5*Φ110.9*2/硅膠		
26		鸭夹	Clamp	4	Φ12.5*Φ1.2/海軍級/橡膠		
25		硅胶管	Silicone tube	2	Φ8*Φ12/硅膠/透明		
24	CM6630-10-12	单向球阀	Anti-back valve ball	1	PP		
23	CM6630-10-11	单向球阀	Anti-back valve shell	1	PC		
22	CM6630-10-22	压片	Clamp	4	电木PP		
21	GBT 845H-S13X100Z/A	白瓷螺釘A	Screw	2	3X10-十字沉頭/SUS		
20	CM6630-10-09	杯手柄	Carafe handle	10	3X10-十字槽半圓頭/鍍白漆		
19		玻璃杯	Carafe	1			
18	CM6630-10-10	杯盖	Carafe cover	1	PP		
17	CM6630-10-21	止漏阀	Anti-drip Valve	1	PP		
16	CM6630D	止漏阀弹簧	Compressing spring	1	Φ6.0*15.8X35.6/不銹鋼		
15	CM6630-10-08	木尺	Gauge	1	PP		
14	CM6630-10-02	止漏密封胶圈	Anti-drip Seal	1	Φ12.5*Φ30.2/硅膠/原色		
13	CM6630-10-07	漏斗	Funnel	1	PP		
12	CM6810-10-05	胶脚	Foot	3	硅膠/Rubber		
11	CM6630-10-06	底座	Bottom plate	1	PP		
10	GBT 845-S13X12Z/A	白瓷螺釘A	Screw	10	3X12-十字槽半圓頭/鍍白漆		
9	CM6630-10-05	主体	Main housing	1	PP		
8	CM6810-10-08	压线片	Cord clamp	1	PA66		
7		开关	SWITCH	1	椭圆带灯250V/C10A		
6	CM6630-10-04	水箱	Water Tank	1	PP		
5	CM6630-00-01	蒸汽导管	Steam conduit	1	Φ6.0*Φ8.5X16mm/PP		
4	CM6630-10-03	水嘴	Sprayer	1	230V 600W		
3	CM6630-10-02	水箱盖	Top cover	1	PP		
2	CM6630-10-01	顶盖	Top cover	1	PP		
1							



齐、正确、牢固。